



USER MANUAL OF WIFIKEY

IMPORTANT NOTE:

Read the manual carefully before installing or connecting your WIFIKEY(Wireless module). Make sure to save this manual for future reference.

CONTENTS

① SPECIFICATION.....	3
② PRECAUTIONS	3
③ DOWNLOAD AND INSTALL APP.....	4
④ INSTALL THE WIFIKEY.....	5
⑤ USER REGISTRATION	6
⑥ NETWORK CONFIGURATION.....	8
⑦ HOW TO USE APP.....	23
⑧ SPECIAL FUNCTIONS.....	25

DECLARATION OF CONFORMITY

Hereby, we declare that this WIFIKEY is in compliance with the essential requirements and other relevant provisions of Directive 2014/53/EU. A copy of the full DoC is attached.
(European Union products only)

1 SPECIFICATION

Model: WIFKEY

Standard: IEEE 802. 11b/g/n

Antenna Type: Printed PCB Antenna

Frequency : WLAN 2400~2483.5 MHz

Operation Temperature:0°C~45°C/32°F~113°F

Operation Humidity: 10%~85%

Power Input: DC 5V/300mA

Maximum Transmitted Power: 19.8dBm Max

2 PRECAUTIONS

- Applicable system: iOS, Android.
(Suggest: iOS 8.0 or later, Android 4.0 or later)
 - Please keep you APP up to date with the latest version.
 - Due to special situation may be occurred, we explicitly claims below: Not all of the Android and iOS system are compatible with APP. We will not be responsible for any issue as a result of the incompatibility.
- **Wireless safety strategy**
WIFKEY only support WPA-PSK/WPA2-PSK encryption and none encryption .
WPA-PSK/WPA2-PSK encryption is recommended.
- **Cautions**
 - Due to different network situation, control process may return time-out sometimes. If this situation occurs, the display between board and App may not be the same, please do not feel confused.
 - Smart Phone camera needs to be 5 million pixels or above to make sure scan QR code well.

- Due to different network situation, sometimes, request time-out could happen, thus, it is necessary to do network configuration again.
- The APP system is subject to update without prior notice for product function improvement. The actual network configuration process may be slightly different from the manual, the actual process shall prevail.
- Please Check The Service Website For More information.

3 DOWNLOAD AND INSTALL APP

CAUTION: The following QR Code is only available for downloading APP. It is totally different with the QR code packed with WIFKEY.



Android

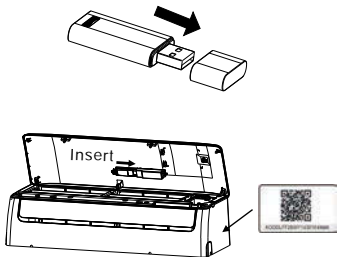


iOS

- Android Phone users: scan Android QR code or go to google play, search 'NetHome Plus" app and download it.
- iOS users: scan iOS QR code or go to APP Store, search 'NetHome Plus" app and download it.

4 INSTALL THE WIFIKEY(wireless module)

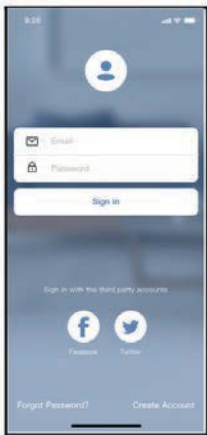
- ① Remove the protective cap of the WIFIKEY (wireless module)
- ② Open the front panel and insert the WIFIKEY (wireless module) into the reserved interface.
- ③ Attach the QR code packed with WIFIKEY (wireless module) to the side panel of the machine, ensure it is convenient to be scanned by the mobile phone. Alternatively, user can take picture of the QR Code and save it into their own phones.



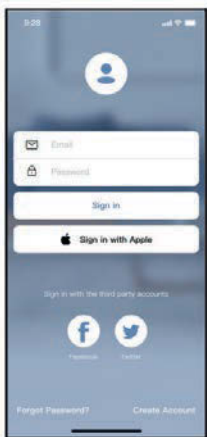
WARNING: This interface is only compatible with WIFIKEY(wireless module) provided by the manufacturer.

5 USER REGISTRATION

- Please ensure your mobile device is connected to Wireless router. Also, the Wireless router has already connected to Internet before doing user registration and network configuration.
- It is better to log in your email box and active your registration account by clicking link in case you forget the password. You can log in with the third party accounts.



Android



iOS

① Click "Create Account"

9:41

Create Account

Enter your Email address

Password

Confirm Password

Password need 6–20 characters,must contain letters and numbers.

Register

I have read and agree to the terms and privacy

- ② Enter your email address and password, and then click "Register"

6 NETWORK CONFIGURATION

Cautions

- It is necessary to forget any other around network and make sure the Android or iOS device just connect to the Wireless network you want to configure.
- Make sure the Android or iOS device Wireless function works well and can be connected back to your original Wireless network automatically.

Kindly reminder:

User must finish all the steps in 8 minutes after powering on air conditioner, otherwise you need to power on it again.

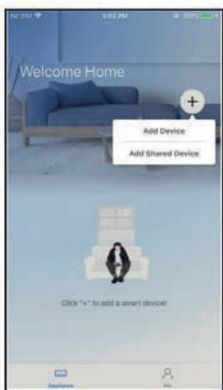
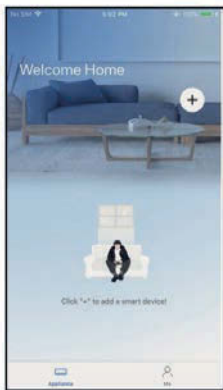
■ Using Android device to do network configuration

- ① Make sure your mobile device has already been connect to the Wireless network which you want to use. Also, you need to forget other irrelevant Wireless network in case it influences your configuration process.
 - ② Disconnect the power supply of air conditioner.
 - ③ Connect the power supply of AC, and continuously press the “LED DISPLAY” or “DO NOT DISTURB” button seven times in 10 seconds.
 - ④ When the unit displays “AP”, it means that the air conditioner wireless has already entered into “AP” Mode.
- Some type of air conditioner do not need the ② step to be in AP.

Note

There are two ways to finish the network configuration:

- Network configuration by Bluetooth scan
- Network configuration by select appliance type



⑤ Press “ + Add Device ”

Network configuration by Bluetooth scan

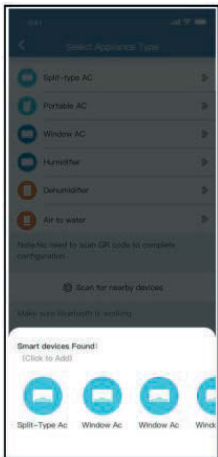
Note: Make sure the bluetooth of your mobile device is working.



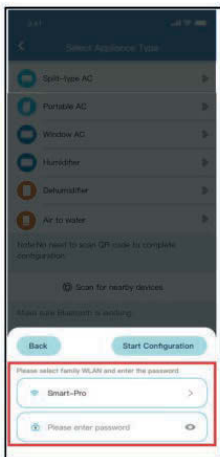
① Press “ + Add Device ”



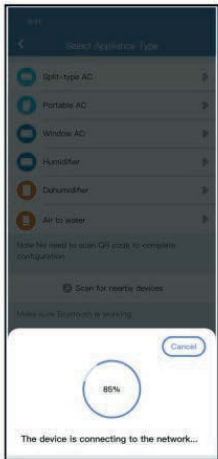
② Press “Scan for nearby devices”



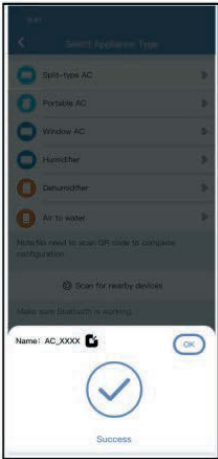
③ Wait smart devices to find, then click to add it



④ Select home Wi-Fi, enter the password



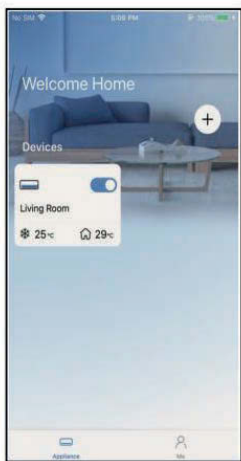
⑤ Wait connecting to the network



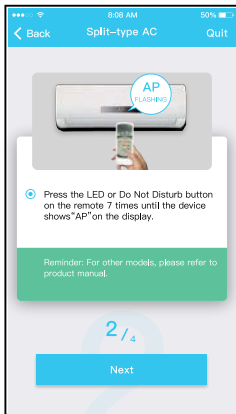
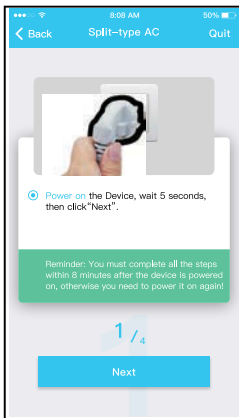
⑥ Configuration Success, you can modify the default name.



- ⑦ You can choose an existing name or customize a new name.



- ⑧ Bluetooth network configuration is successful, now you can see the device in the list.



⑦ Follow the above steps to enter "AP" mode.



⑧ Choose the network configuration method.



⑨ Choose the "Scan the QR code" method.

8:08 AM 50%

Back Split-type AC Quit

WLAN

net_ac_XXXX

Go to the phone's "WLAN" settings, use the password "12345678" to connect to the network "net_ac_XXXX".

Reminder: If "net_ac_XXXX" network is not found on the WLAN, check whether the device is in AP mode. If not, try again.

3 / 4

Go to WLAN Settings

8:08 AM 50%

Back Split-type AC Quit

Please select home WLAN and enter the password.

AERMEC_ly_5EF6

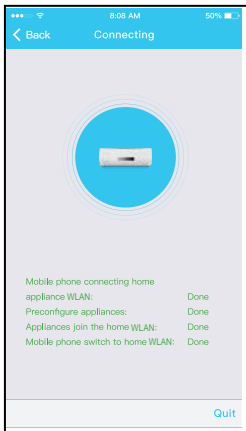
Please enter password

4 / 4

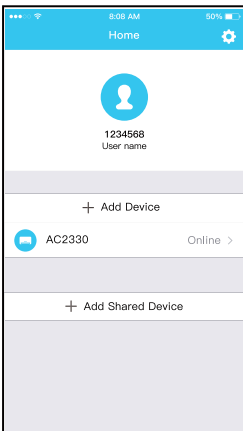
Start Configuration

⑨ Or choose the "Manual Setup" method.

⑩ Please enter password



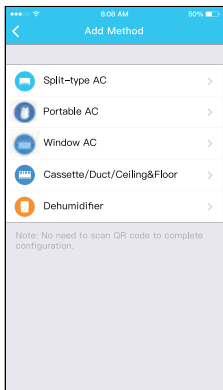
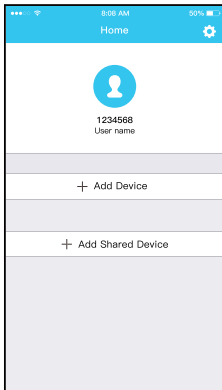
⑪ Network configuration is successful



⑫ Configuration Success, you can see the device on the list.

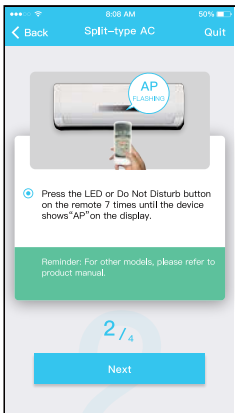
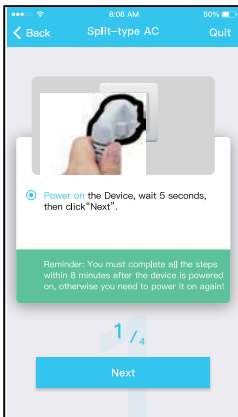
■ Using iOS device to do network configuration

- ① Make sure your mobile device has already been connected to the Wireless network which you want to use. Also, you need to forget other irrelevant Wireless network in case it influences your configuration process.
- ② Disconnect the power supply of AC(some units).
- ③ Connect the power supply of AC, and continuously press the “LED DISPLAY” button or “DO NOT DISTURB” button seven times in 10 seconds.
- ④ When the AC displays “AP”, it means that the AC Wireless has already entered into “AP” Mode.



⑤ Press “+ Add Device”

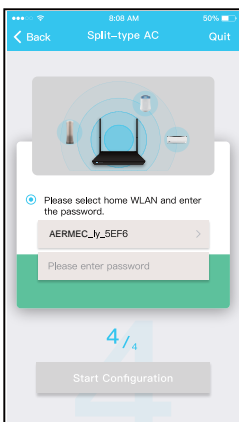
⑥ Select the appliance you are setting up



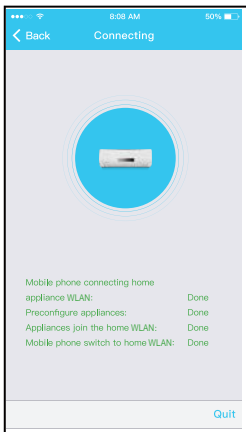
⑦ Follow the above steps to enter "AP" mode.



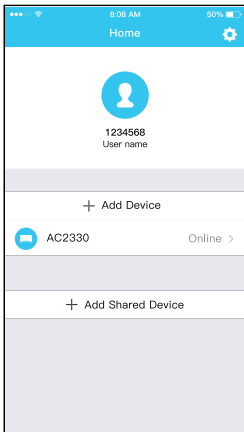
⑧ Connect to the Wireless network.



⑨ Please enter password



⑩ Network configuration is successful



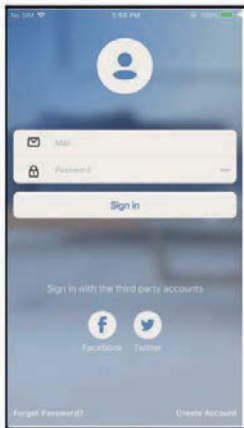
⑪ Configuration Success, you can see the device on the list.

NOTE:

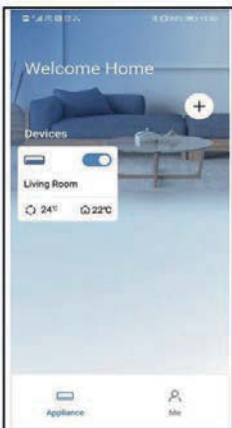
- When finishing network configuration, APP will display success cue words on the screen.
- Due to different internet environment, it is possible that the device status still display “offline” . If this situation occurs, it is necessary to pull and refresh the device list on the APP and make sure the device status become “online” . Alternatively, user can turn off the AC power and turn on it again, the device status will become “online” after few minutes.

7 HOW TO USE APP

Please ensure both your mobile device and air conditioner are connected to the Internet before using app to control the air conditioner via internet, please follow the next steps:



① Click " Sign in "



② Choose the air conditioner.



- ③ Thus, user can control air conditioners on/off status, operation mode, temperature, fan speed and so on.

NOTE:

Not all the function of the APP is available on air conditioner. For example: ECO, Turbo, Swing function, please check the user manual to find more information.

8 SPECIAL FUNCTIONS

■ Schedule

Weekly, user can make an appointment to turn on or off AC on specific time. User also can choose circulation to keep the AC under schedule control every week.



9:41 Schedules Confirm

2:01 10:00

9	04	
10	05	
11	06	On
12	07	Off
13	08	

Repeat Mon, Thur. >

Settings Cool STC High >

Label Unnamed >

9:41 Repeat Confirm

Commonly used

Every day

Weekdays

Only once

Custom

Monday

Tuesday

Wednesday

Thursday

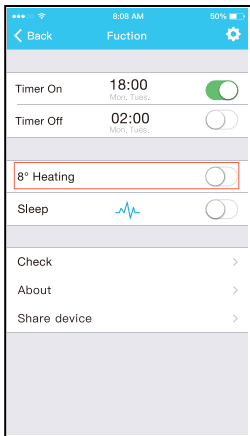
Friday

Saturday

Sunday

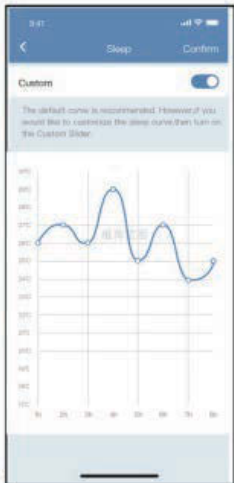
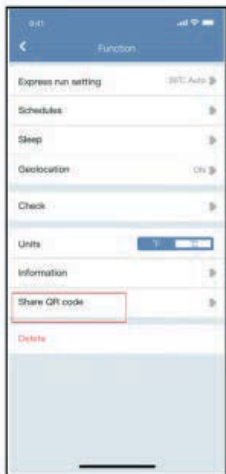
■ 8°C Heat

User can let the AC run under 8°C Heat by one-click. When people go outside, this function can protect your furniture from frost damage.



■ Sleep

User can customize their own comfortable sleep by setting target temperature.



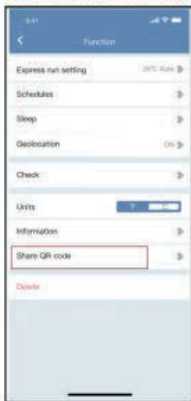
■ Check

User can simply check the AC running status with this function. When finishing this procedure, it can display the normal items, abnormal items, and detail information.



■ Share Device

The air conditioner can be controlled by multi-users at the same time by Share Device function.



- ① Click "Shared QR code" ② QR code display.



③ The other users must log in "Nethome Plus" app first, then click "Add Share Device" on their own mobile, then ask them to scan the QR code.

④ Now the others can add the shared device.

AERMEC S.p.A.

Via Roma, 996 – 37040 Bevilacqua (VR) Italy
Tel. (+39) 0442 633111 – Telefax (+39) 0442 93577
www.aermec.com – sales@aermec.com

Modello Model	
Versione Version	
Numero di Serie Serial Number	
Data di Produzione Production Date	

Il presente prodotto deve essere installato esclusivamente con l'Abbinatore tra Unità Interne, Unità Esterne e relativi Accessori visibile nella Tabella 1 sotto riportata. Solo rispettando tali abbinamenti è valida la seguente Dichiarazione:

DICHIARAZIONE DI CONFORMITÀ UE

Noi, firmatari della presente, dichiariamo sotto la nostra esclusiva responsabilità che l'insieme in oggetto così definito:

Condizionatore a Pompa di Calore di tipo Split serie SGE e conforme alle seguenti Direttive:

- Direttiva Apparecchiature Radio: RED 2014/53/UE
- Direttiva Attrezzature in Pressione: PED 2014/68/UE

The above equipment must be combined with Indoor Units, Outdoor Units and related Accessories seen in the Table 1 below following Declaration is confirmed just with the combination as above stated only:

DECLARATION OF CONFORMITY EU

We, the signatories of the present document, declare under our own exclusive responsibility that this assembly called:

Split system air conditioner and Heat Pump units SGE series conforms to the following Directive:

- Radio Equipment Directive: RED 2014/53/EU
- Pressure Equipment Directive: PED 2014/68/EU

Le présent produit doit être installé exclusivement, associé avec les Unités Intérieures, Unités Extérieures et ses Accessoires connexes vu dans le Tableau 1 ci-dessous. La Certification suivante est valable uniquement si ces associations sont respectées:

CERTIFICAT DE CONFORMITE UE

Nous, signataires de la présente, déclarons sous notre responsabilité exclusive que l'ensemble ainsi défini:

Climatiseur et Pompe à Chaleur type Split série SGE est conforme aux Directive suivante:

- Directive équipements radioélectriques: RED 2014/53/UE
- Directive équipements sous pression: PED 2014/68/UE

Das vorliegende Produkt muss ausschließlich in Verbindung mit Innen- und Außeneinheiten, sowie mit dem betreffenden Zubehör installiert werden (siehe untenstehende Tabelle 1). Nur wenn die vorgeschriebenen Kombinationen respektiert werden, ist folgende Bestätigung gültig:

EU-KONFORMITÄTSERKLÄRUNG

Wir, die Unterzeichner der vorliegenden Urkunde, erklären eigenverantwortlich, dass die oben genannte Maschineneinheit, bestehend aus:

Klimageräte und Wärmepumpen in Splitbauweise der Serie SGE folgenden Richtlinien entspricht:

- Funkanlagenrichtlinie: RED 2014/53/UE
- Druckgeräterichtlinie: PED 2014/68/UE

El presente producto debe ser instalado exclusivamente en combinación con las unidades Internas, las unidades externas y Accesorios relacionados visto en la siguiente tabla 1. Es mediante el respeto de estas combinaciones es válida la siguiente Declaración:

DECLARACIÓN DE CONFORMIDAD UE

Los que suscriben la presente declaran bajo la propia y exclusiva responsabilidad que el conjunto en objeto, definido como sigue:

Acondicionador y Bomba de Calor Split system serie SGE respecta las siguientes Directivas:

- Equipos radioeléctricos Directiva: RED 2014/53/UE
- Equipos a presión Directiva: PED 2014/68/UE

e risulta progettato, prodotto e commercializzato soddisfacendo le disposizioni delle seguenti Normative:

- EN 60335-2-40: 2003
- EN 55014-1: 2006
- EN 55014-2: 2015
- EN 61000-3-2: 2014
- EN 61000-3-3: 2013
- ETSI EN 300 328 V2.1.1
- ETSI EN 301 489-1 V2.1.1
- ETSI EN 301 489-17 V3.1.1
- EN 62311: 2008
- EN 378-2: 2016

Il prodotto, in accordo con la direttiva 2014/68/UE, soddisfa la procedura di Garanzia qualità del processo di produzione (modulo D1) con certificato emesso dall'organismo notificato n.0598 SGS.

and is designed, produced and marketed in compliance with the provisions of the following Standards:

- EN 60335-2-40: 2003
- EN 55014-1: 2006
- EN 55014-2: 2015
- EN 61000-3-2: 2014
- EN 61000-3-3: 2013
- ETSI EN 300 328 V2.1.1
- ETSI EN 301 489-1 V2.1.1
- ETSI EN 301 489-17 V3.1.1
- EN 62311: 2008
- EN 378-2: 2016

The product, in agreement with Directive 2014/68/UE, satisfies the Quality Assurance of the Production Process procedure (form D1) with certificate issued by the notified body n.0598 SGS.

et est conçu, produit et commercialisé conformément aux dispositions des Normatives suivantes:

- EN 60335-2-40: 2003
- EN 55014-1: 2006
- EN 55014-2: 2015
- EN 61000-3-2: 2014
- EN 61000-3-3: 2013
- ETSI EN 300 328 V2.1.1
- ETSI EN 301 489-1 V2.1.1
- ETSI EN 301 489-17 V3.1.1
- EN 62311: 2008
- EN 378-2: 2016

Le produit, selon la directive 2014/68/UE, respecte la procédure d'Assurance de la Qualité du Procédé de fabrication (module D1) par le certificat émis par l'organisme notifié n.0598 SGS.

sowie unter Einhaltung der folgenden Bestimmungen entworfen, hergestellt und vertrieben wird:

- EN 60335-2-40: 2003
- EN 55014-1: 2006
- EN 55014-2: 2015
- EN 61000-3-2: 2014
- EN 61000-3-3: 2013
- ETSI EN 300 328 V2.1.1
- ETSI EN 301 489-1 V2.1.1
- ETSI EN 301 489-17 V3.1.1
- EN 62311: 2008
- EN 378-2: 2016

In Übereinstimmung mit der Richtlinie 2014/68/EU, erfüllt das Produkt die Anforderungen des Qualitätssicherung bezogen auf den Produktionsprozess (Modul D1), von der benannten Stelle ausgestelltes Zertifikat n.0598 SGS

y resulta proyectado, producido y comercializado satisfaciendo las disposiciones de las siguientes Normativas:

- EN 60335-2-40: 2003
- EN 55014-1: 2006
- EN 55014-2: 2015
- EN 61000-3-2: 2014
- EN 61000-3-3: 2013
- ETSI EN 300 328 V2.1.1
- ETSI EN 301 489-1 V2.1.1
- ETSI EN 301 489-17 V3.1.1
- EN 62311: 2008
- EN 378-2: 2016

El producto, conforme a la directiva 2014/68/UE, cumple con el procedimiento de aseguramiento de la calidad del proceso de producción (módulo D1) con certificado emitido por el organismo autorizado n.0598 SGS.

Tabella 1/ Table 1/ Tableau 1/ Tabelle 1/ Tabla 1

Abbinamenti / Combinations / Associations / Kombinationen / Combinaciones		
Unità Esterne Outdoor Units Unités Extérieures Außenheiten Unidades Externas	Unità Interne Indoor Units Unités Intérieures Inneneinheiten Unidades Internas	Accessori Accessories Accessories Zubehör Accesorios
SGE250	SGE250W	WIFIKEY
SGE350	SGE350W	
SGE500	SGE500W	
SGE700	SGE700W	

Nota / Note / Notiz:

Gli abbinamenti tra Unità Esterne, Unità Interne e Accessori dovranno essere in accordo a quanto riportato nei Manuali.

The combinations between Outdoor Units, Indoor Units and Accessories must be in accordance as reported on the Manuals.

Les combinaisons entre les unités extérieures, les unités intérieures, et les accessoires, doivent être conformes aux indications présents dans les Manuels.

Die Kombinationen zwischen Außen- und Inneneinheiten sowie mit den Zubehören sollen mit den Informationen im Handbuch übereinstimmen werden.

Las combinaciones de las unidades externas, las unidades internas y accesorios deben ser de acuerdo a lo reportado en los Manuales.

Company will not be liable for any issues and problems caused by Internet, Wireless Router and Smart Devices. Please contact the original provider to get further help.

CS374U-APP(OEM)